

IsatPhone<sup>2</sup>

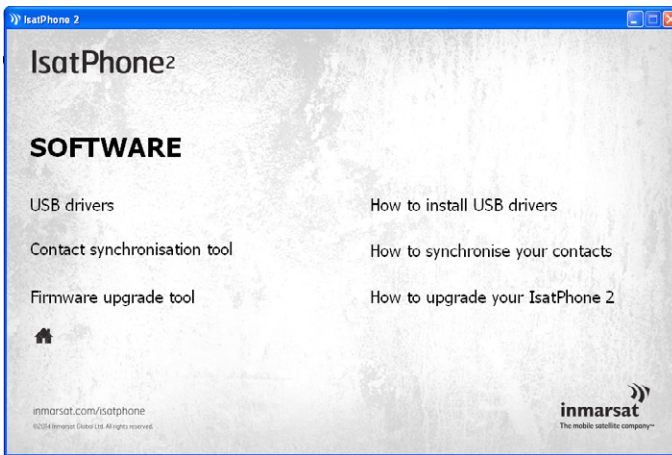
# HOW TO

Install USB Drivers

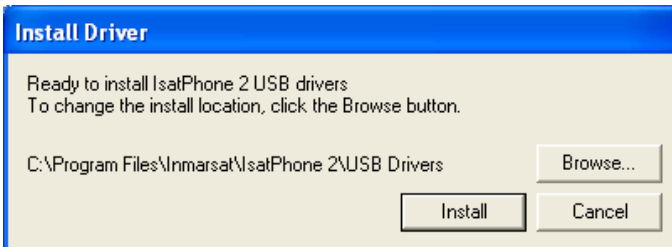
You need to install the USB Drivers on your computer before installing the Contact Synchronisation and Firmware Upgrade Tools. Installing the USB Drivers also reduces your phone's charging time.

The tool supports Windows XP, Windows Vista, Windows 7 and Windows 8.

**To install the USB Drivers on your computer, perform the following procedure:**



Select **Software > USB Drivers** from the USB drive.



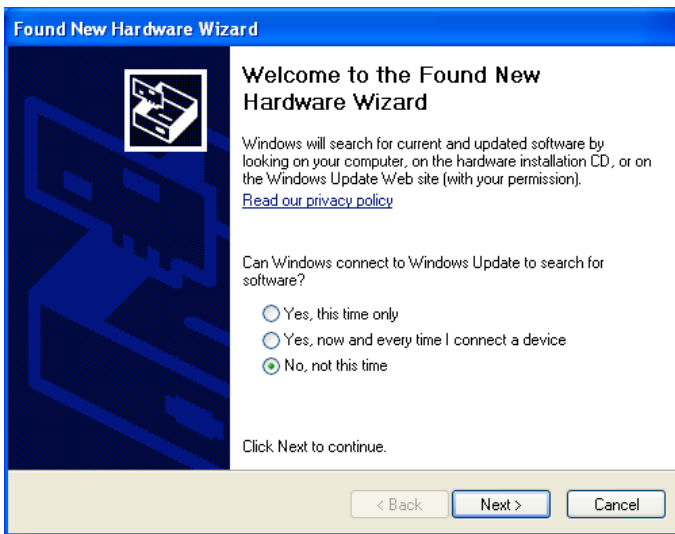
Click **Install**. The **Software Installation** dialogue box appears.



Click **OK**. The drivers are successfully installed.

# Installing the new hardware for Windows XP

To install the new hardware for Windows XP, perform the following procedure:

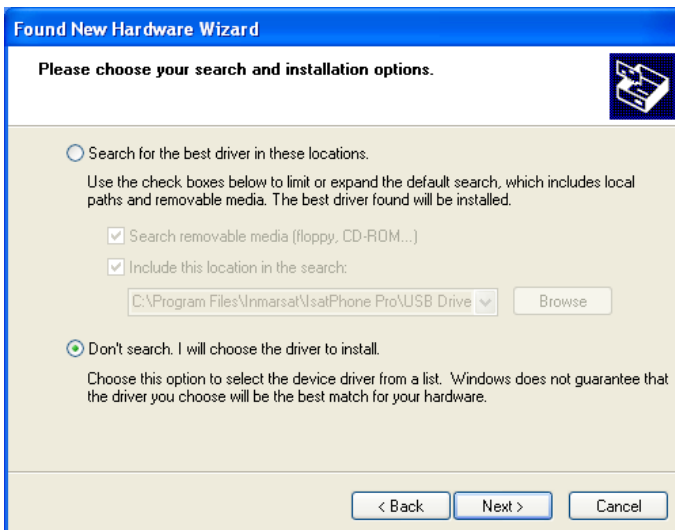


Connect your IsatPhone 2 to your computer with the supplied USB cable. If your phone is not switched on, switch it on now.

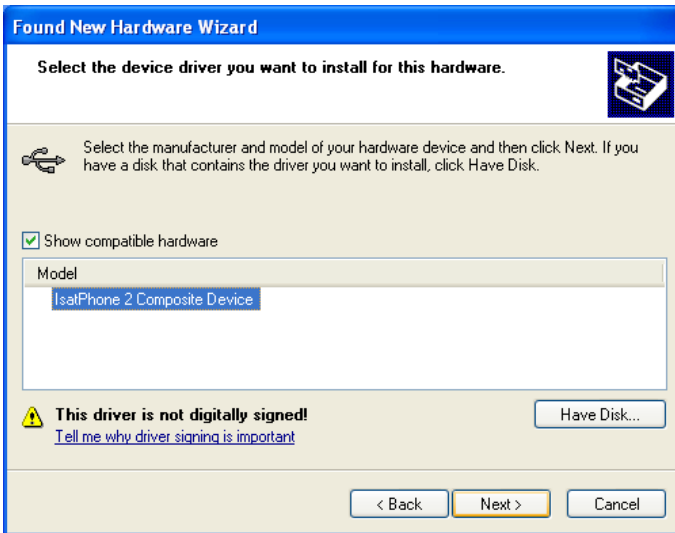
When the USB cable is connected, the following pop-up message will be displayed: 'New hardware found: IsatPhone 2 Composite Device.'

The **Found New Hardware Wizard** appears.

Select **Install from a list or specific location (Advanced)** and click **Next**.

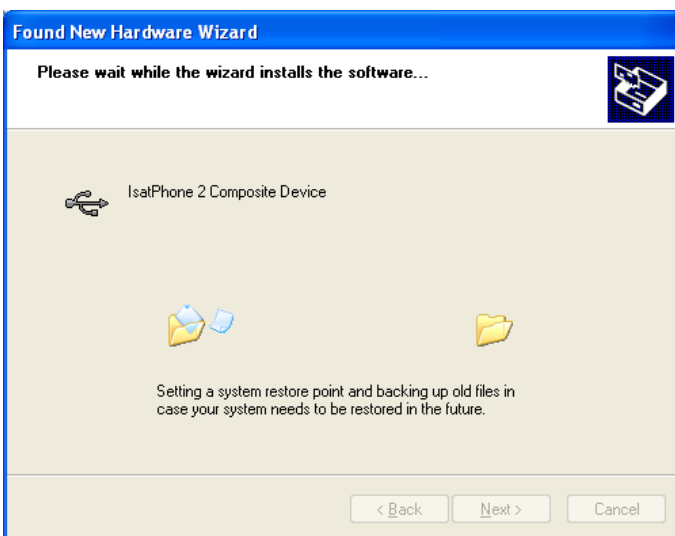


Select **Don't search. I will choose the driver to install** and click **Next**.

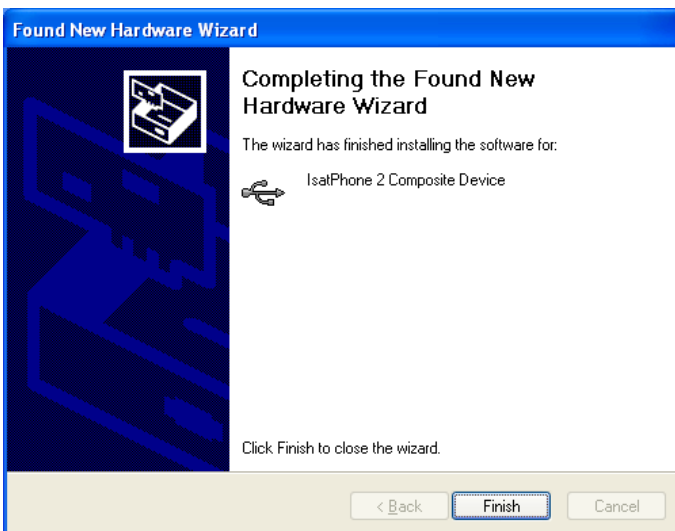


Click **Next** again.

The **Hardware Installation** dialogue box appears.



The **Found New Hardware Wizard** installs the software.

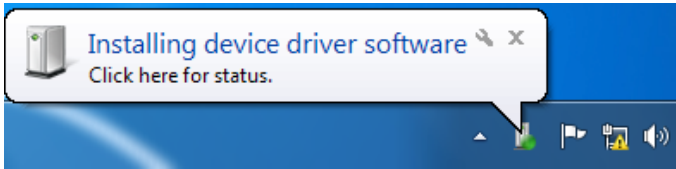


Click **Finish**. The **System Settings Change** dialogue box appears.

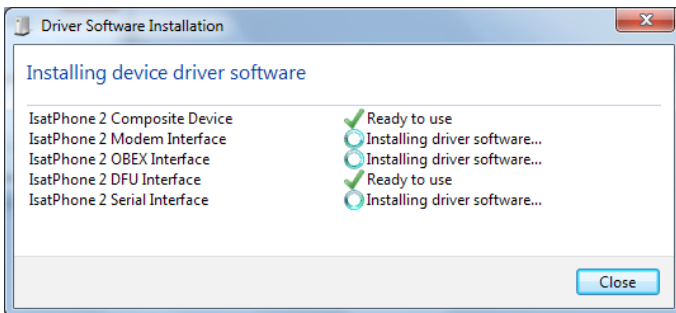
Disconnect the USB cable from your computer and your phone.

# Installing the new hardware for Windows Vista and Windows 7

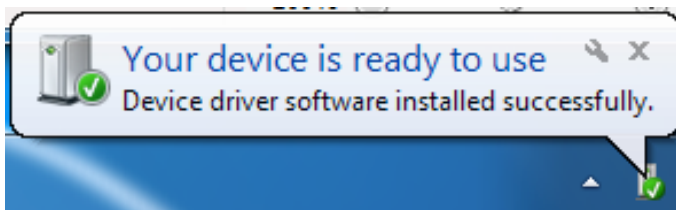
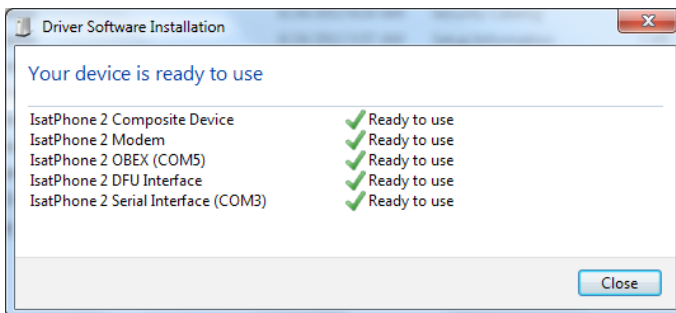
Once the device is connected, the driver's installation will automatically start for the device connected



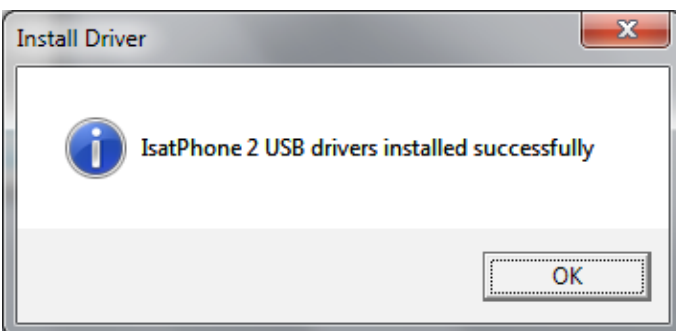
Click on the icon from the task bar to view the installation status.



The installation status window displayed when the icon on the task bar is selected.

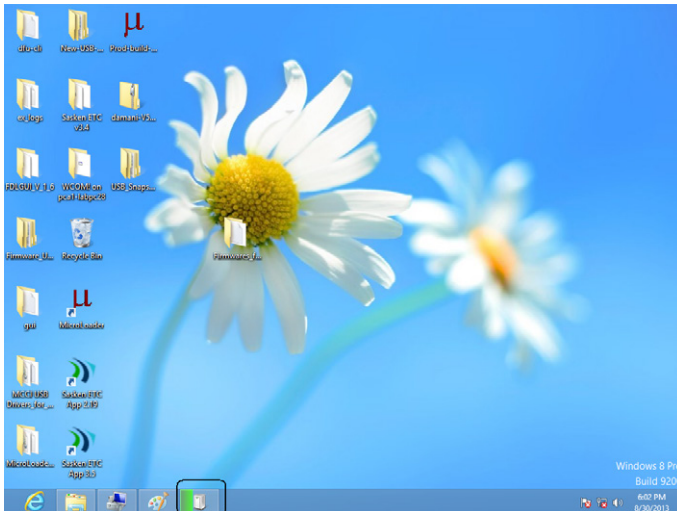


Installation successful notification.

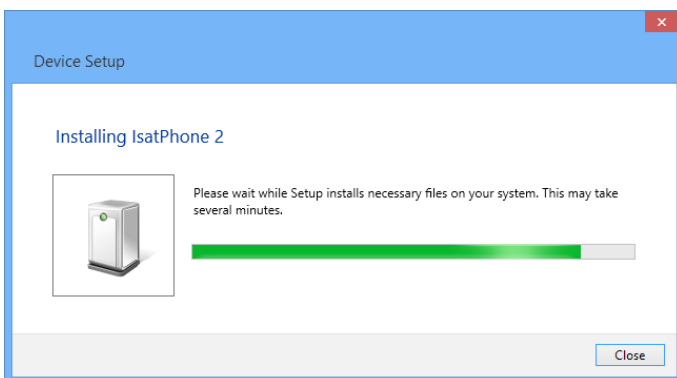


# Installing the new hardware for Windows 8

Once the device is connected, the driver's installation will automatically start for the device connected.



Click on the icon from the task bar to view the installation status.



The installation status window displayed when the icon on the task bar is selected.



Installation successful notification.

[inmarsat.com/isatphone](http://inmarsat.com/isatphone)

While the information in this How to Install USB Drivers document has been prepared in good faith, no representation or warranty, express or implied, is made or given as to the adequacy, accuracy, reliability or completeness of such information. Inmarsat Global Limited nor any group company or their respective officers, employees or agents shall have any responsibility or liability to any person resulting from the use of the information in this document. Copyright © Inmarsat Global Limited 2014. All rights reserved. INMARSAT is a registered trademark of the International Mobile Satellite Organisation; the Inmarsat LOGO is a registered trademark of Inmarsat (IP) Company Limited. Both trademarks are licensed to Inmarsat Global Limited. IsatPhone 2 How to Install USB Drivers February 2014.